



FOOD TO ADDRESS OUTCOMES: STRATEGIES TO SUPPORT PATIENTS WITH CANCER FACING FOOD INSECURITY

MARCH 14, 2023



1



WELCOMING REMARKS

Lauren Berger, MPH
Senior Director
Professional Education & Engagement
The Leukemia & Lymphoma Society
Rye Brook, NY

Kristen Sullivan, MPH, MS
Director, Prevention and Survivorship
American Cancer Society
Atlanta, GA



2



FACULTY

Francesca M. Gany, MD, MS

Chief, Immigrant Health and Cancer Disparities Service
Memorial Sloan Kettering Cancer Center
New York, NY

Emily Kain, MPH

Senior Program Manager
Community Health
MaineHealth
Portland, ME



3



TARGET AUDIENCE

This CE activity is intended for oncology nurses, social workers, and other healthcare professionals involved in the care of patients with cancer

EDUCATIONAL OBJECTIVES

After completing this CE activity, the participant should be better able to:

- Describe the prevalence of food insecurity in patients with cancer and how it influences patient outcomes
- Explain how to effectively screen for food insecurity in the clinical setting
- Assess opportunities to implement food access programming and identify potential collaborators
- Identify three methods to provide access to healthy food resources
- Provide resources, tools, and tips for patient support



4

DISCLOSURES

Francesca M. Gany, MD, MS, has a financial interest/relationship or affiliation in the form of:

The following relationships have ended within the last 24 months:

Advisory Board/Consultant: Bristol Myers Squibb.

Emily Kain, MPH, has nothing to disclose.



5

DISCLOSURE

Disclosure & Conflict of Interest Policy

Medical Learning Institute, Inc., is committed to providing high quality continuing education to healthcare professionals, as individuals and teams, with a protected space to learn, teach, and engage in scientific discourse free from influence from ineligible companies that may have an incentive to insert commercial bias into education. To that end, MLI requires faculty, presenters, planners, staff, and other individuals who are in a position to control the content of this CE activity to disclose all financial relationships they have had in the past 24 months with ineligible companies as defined by the ACCME, as related to the content of this CE activity, regardless of the amount or their view of the relevance to the education. All identified COI will be thoroughly vetted and mitigated according to MLI policy. These disclosures will be provided to learners prior to the start of the CE activity.

Planning Committee and Content/Peer Reviewers

The planners and content/peer reviewers from Medical Learning Institute, Inc. and The Leukemia & Lymphoma Society do not have any relevant financial relationships to disclose with ineligible companies unless listed below.

Planner

Lauren Berger, MPH
The Leukemia & Lymphoma Society

Lauren Berger, MPH, has a financial interest/relationship or affiliation in the form of:
Stock Ownership with Bristol Myers Squibb, Gilead Sciences, Inc., Merck & Co., Inc., Organon & Co., Pfizer Inc., and Viatrix Inc.

All of the relevant financial relationships of individuals for this activity have been mitigated.

Disclosure of Unlabeled Use

This educational activity may contain discussions of published and/or investigational uses of agents that are not indicated by the FDA. The planners of this CE activity do not recommend the use of any agent outside of the labeled indications. The opinions expressed in the accredited CE activity are those of the presenters and do not necessarily represent the views of the planners. Please refer to the official prescribing information for each product for discussion of approved indications, contraindications, and warnings.

Disclaimer

Participants have an implied responsibility to use the newly acquired information to enhance patient outcomes and their own professional development. The information presented in this CE activity is not meant to serve as a guideline for patient management. Any procedures, medications, or other courses of diagnosis or treatment discussed or suggested in this CE activity should not be used by clinicians without evaluation of their patient's conditions and possible contraindications and/or dangers in use, review of any applicable manufacturer's product information, and comparison with recommendations of other authorities.

About this Activity

Medical Learning Institute, Inc. and The Leukemia & Lymphoma Society are responsible for the selection of this activity's topics, the preparation of editorial content, and the distribution of this CE activity. Our activities may contain references to unapproved products or uses of these products in certain jurisdictions.

The materials presented here are used with the permission of the authors and/or other sources. These materials do not necessarily reflect the views of Medical Learning Institute, Inc. or any of its partners, providers, and/or supporters.



6

CE DESIGNATION

Accreditation, Support and Credit



In support of improving patient care, this activity has been planned and implemented by Medical Learning Institute, Inc., and The Leukemia & Lymphoma Society. Medical Learning Institute, Inc. is jointly accredited by the Accreditation Council for Continuing Medical Education (ACCME), the Accreditation Council for Pharmacy Education (ACPE), and the American Nurses Credentialing Center (ANCC), to provide continuing education for the healthcare team.

Nursing Continuing Professional Development

Successful completion of this nursing continuing professional development activity will be awarded 1.0 contact hour and no contact hour in the area of pharmacology.

Social Worker Continuing Education



As a Jointly Accredited Organization, Medical Learning Institute, Inc. (MLI) is approved to offer social work continuing education by the Association of Social Work Boards (ASWB) Approved Continuing Education (ACE) program. Organizations, not individual courses are approved under this program. Regulatory boards have the final authority on courses accepted for continuing education credit.

Social workers completing this course receive 1.0 Clinical Social Work continuing education credit.

Interprofessional Continuing Education (IPCE) Statement



This activity was planned by and for the healthcare team, and learners will receive 1.0 Interprofessional Continuing Education (IPCE) credit for learning and change.

Support Statement

There is no commercial support associated with this CE activity.

Providers

This activity is provided by Medical Learning Institute, Inc. and The Leukemia & Lymphoma Society, in collaboration with The American Cancer Society.



7

METHOD OF PARTICIPATION

There are no fees for participating in or receiving credits for this accredited CE activity. For information on applicability and acceptance of continuing education credit for this activity, please consult your professional licensing board.

Learners must participate in the entire CE activity and submit the online evaluation form to earn credit, by clicking the link at the end of the presentation. Once submitted, the certificate will be generated. If you have questions regarding your certificate, please contact via email at ndane@mlieducation.org.



8

FOOD: Food to Overcome Outcomes Disparities

Francesca Gany, MD, MS
Chief, Immigrant Health and Cancer Disparities Center(IHCD)



Memorial Sloan Kettering
Cancer Center



FOOD


9

Immigrant Health and Cancer Disparities (IHCD) Center

Mission

To promote health justice and equity for minoritized, low socioeconomic status, immigrant, and other underserved communities

locally, nationally, globally
across the cancer continuum

Research, Outreach, Community Engagement, Service Delivery,
Training, Program and Policy Development

Interrelated

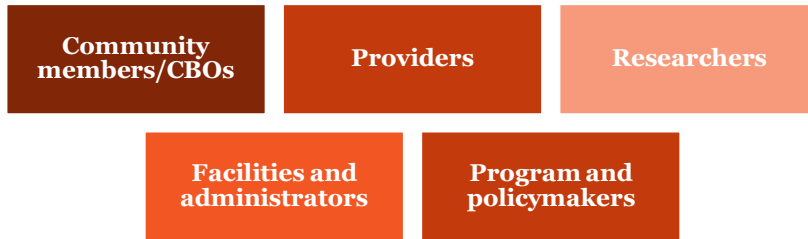
We use a social determinants lens in all of our work

FOOD


10

FOOD Program part of ICCAN Integrated Cancer Care Action Network

ICCAN is a network of 364 organizations/resources to screen for and provide essential needs resources to cancer patients



11

Food Insecurity (FI) and Cancer Care

- Cancer patients often have increased nutritional needs
- Treatment-related costs (e.g. co-pays, Rx, travel) and income loss contribute
 - FI goes hand in hand with financial toxicity of cancer treatment but precedes it for many
- FI → Poorer functional, emotional, and social well-being, higher depression risk
- FI → Care delays, cost-related med non-adherence → Poorer outcomes
 - McDougall, Anderson, Adler Jaffe et al. (2020) – New and persistent food insecurity strongly associated with forgoing, delaying, or altering cancer care
- FI associated with overweight/obesity → higher cancer risk/cvd risk
- FI a window into other essential needs, e.g. housing, transportation, legal

Vitally important to screen for and address FI in cancer patients



12

Food Insecurity Prevalence

Varies by demographic characteristics

- NHANES 2011-2014 8.36% FI of overall sample of cancer survivors (N>800)
 - associated with younger age, female, low SES, NHW or Black

Trego, et al Journal of Cancer Survivorship (2019) 13:641–652
- BRFSS 2015 22.7% FI (N>10,000)

Charkhchi, P., et al.. (2017) J Gen Intern Med 33(5): 644-650
- Underserved cancer patients in New York City safety net cancer clinics (N=404)
 - 56% food insecure:
 - Associated with treatment nonadherence
 - SNAP recipients as likely to be food insecure as those not receiving SNAP
- Comprehensive Cancer Center (N=238)
 - 18%-30% food insecure, depending on clinic



13

Food Insecurity Assessment

How to assess Food Insecurity?

- Many screeners/assessments
 - USDA 18, 10, and 6 item short form household FI assessments
https://www.ers.usda.gov/webdocs/publications/43164/15815_efan02013f_1_.pdf?v=5986.1
 - Hunger Vital Sign <https://childrehealthwatch.org/public-policy/hunger-vital-sign/>
 - Within the past 12 months we worried whether our food would run out before we got money to buy more.
 - Within the past 12 months the food we bought just didn't last and we didn't have money to get more.
 - 'often true' or 'sometimes true' (vs. 'never true')
 - We have developed an easy to use 1-question food needs screener
 - “Do you need help getting food?”/If yes, why?
- Work being done now on nutrition insecurity screeners

Food Insecurity quantity of food/ Nutrition Insecurity quality of food

How often should Food Insecurity be assessed?

FI worse for patients as treatment continues, so assessing only at intake not enough



14

FOOD: Pantry Intervention

- Emergency food system does not address cancer patient needs (hours, location, foods)
- Medically tailored, cancer clinic-based food pantries
 - Whole grains, canned protein, milk, soups, shelf-stable vegetables and fruit, fresh produce when available
 - + Nutrition and Cancer baseline education, transcated into multiple languages
 - + FOOD Navigators ;benefits applications, local emergency food resources
- Public and not-for-profit partners to enable us to acquire the food



Health Bucks

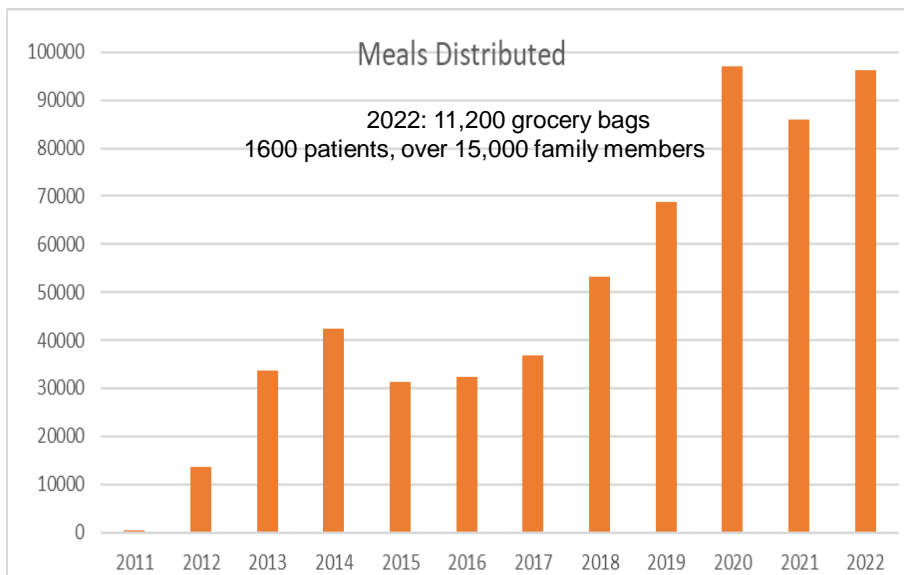


- MSK FOOD Program → Policy Changes



15

FOOD: Meal Equivalents Distributed



16

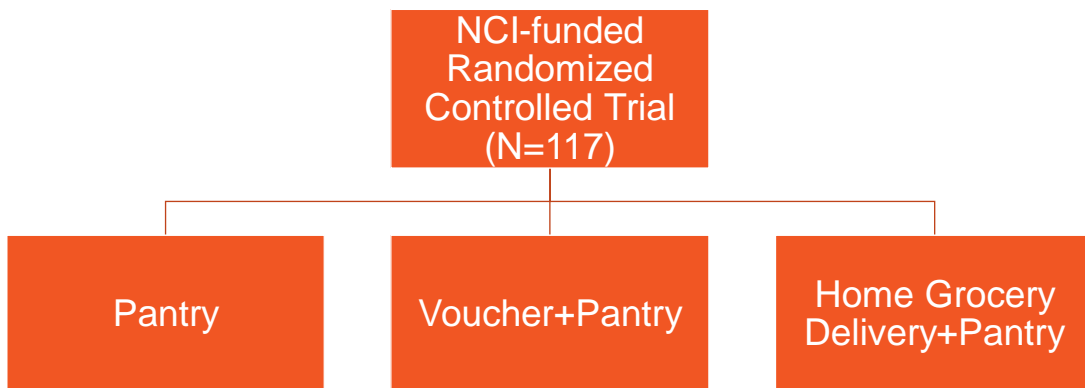
COVID-19 Pivot



FOOD 

17

Testing the Impact of the Pantry + Additional Strategies



FOOD 

18

Outcomes 3-arm Randomized Controlled Trial

Treatment Completion (Primary Outcome)

- Voucher+pantry arm → greatest treatment completion
94% vs 83% delivery+pantry vs 78% pantry (p<0.034)*

Food Security

- All arms became food secure

Depression Symptoms (PHQ-9)

- Across all arms, fewer depression symptoms at follow-up (p=.000)***
Statistically significant in Pantry and Delivery + Pantry

Quality of Life (FACT-G)

- Scores improved in all 3 arms (p=.000)***
Statistically significant in Pantry and Delivery + Pantry

Food to Overcome Outcomes Disparities: A Randomized Controlled Trial of Food Insecurity Interventions to Improve Cancer Outcomes
Francesca Gany, Irina Melnic, Minlun Wu, Yuelin Li, Jackie Finik, Julia Ramirez, Victoria Blinder, Margaret Kemery, Elizabeth Guevara, Caroline Hwang, Jennifer Leng, Journal of Clinical Oncology 2022 40:31, 3603-361



19

Voucher Arm Food Choices

- Patients spent the most on animal protein (22% of voucher money), fruits (15%), and vegetables (13%)
- 77% of funds spent on “healthy” food each month
 - Patients with limited English proficiency spent more on healthy foods than English-speaking patients (P=0.01)
 - Patients born outside the U.S. spent more on healthy foods than U.S.-born peers (P=0.001)



20

FOOD Intervention Weekly Costs

Cancer Clinic-based Weekly Food Pantry

\$63/patient when 12 patients (\$52/patient for 50 patients)

Food Voucher

\$81/patient per week (plus weekly pantry access)

Grocery Delivery

\$71/patient (plus weekly pantry access)

Costs include staff salary and travel costs, food or voucher purchase costs, and grocery home delivery costs

Very low costs when considered in the context of cancer care costs



21

The FOOD Team

MSKCC

Francesca Gany, MD, MS
 Julia Ramirez, MA
 Luke Paolantonio, MPH
 Irina Melnic, MPH
 Bharat Narang, MPH
 Minlun Wu, MPA
 Allison Schachter, MD
 Chanel Martinez
 Kayla Gangemi
 Marisol Lucero
 Angelica Alvarado
 Maria Claros
 Melissa Lopez

Partners

Margaret Kemeny, MD
**NYC Health + Hospitals/Queens
 Cancer Center**

Elizabeth Guevara, MD
**The Brooklyn Hospital Cancer
 Center**

Caroline Hwang, MD
**NYC Health + Hospitals/Lincoln
 Hospital Center**

Dina Makower, MD
Montefiore Medical Center

Tarek Elrafei, MD
 Ladysbelle Garcia, RN
**NYC Health + Hospitals/Jacob
 Hospital**

Ilmana Fulger, MD
Saint Barnabas Hospital



22

Immigrant Health and Cancer Disparities

Service Chief
Francesca Gany, MD, MS

Clinical Research Manager
Bharat Narang

Administrative Staff
Kristin O'Donoghue
Brooke Slavcross
Caitlin Frankel
Melissa Clyne
Milvia Perez

Technology and Access
Dennis Yu
Sheena Mirpuri, PhD

Research Biostatistics
Jackie Finik, PhD
Yuelin Li, PhD

Arab Health Initiative
Claudia Ayash
Noor Raad
Redwane Gatarny

Chinese American Care Access Program
Jennifer Leng, MD, MPH
Chloe Chan

Ventanilla De Salud
Julia Ramirez
Abraham Aragones, MD, MSCI
Jessica Flores Rodriguez

Food to Overcome Outcome Disparities (FOOD)
Julia Ramirez
Luke Paolantonio
Irina Melnic
Angelica Alvarado
Maria Claros
Melissa Lopez
Chanel Martinez
Allison Schacter
Kayla Gangemi

Community Outreach and Engagement
Julia Ramirez

Language Initiatives
Lisa Diamond, MD, MPH
Javier Gonzalez

Integrated Cancer Care Access Network (ICCAN)
Julia Ramirez
Irina Melnic
Devika Jutagir, PhD
Marisol Lucero

Latino Health Initiative
Abraham Aragones, MD, MSCI
Rosario Costas-Muniz, PhD
Carolina Herrera
Maria Claros
Kelly Tellez

Ameliorating Financial Toxicity
Victoria Blinder, MD, MPH
Meredith Doherty, PhD
Christina Tran
Catherine Allende
Kimberly Chan

Taxi Network
Nujbat Meraji
Muksha Jingree
Catherine Leopold
Chanel Martinez

Cultural and Linguistic Adaptations
Rosario Costas-Muniz, PhD

Internship Programs
Claudia Ayash, MPH
Leeza Menon

IHCD Associate Members
Smita Banerjee, PhD
Carol Brown, MD, MPH
Michelle Johnson, MD, MPH
Peter Kingham, MD, PhD

South Asian Health: From Research to Practice to Policy
Sudha Acharya
Alison Karanz, PhD
Aljaz Khwaja, DrPH, MPH, MBBS
Jennifer Leng, MD, MPH

U54CA137788- CCNY-MSKCC Partnership for Cancer Research, Training & Community Outreach
Tim Ahles, PhD
Karen Hubbard, PhD
Shelley Anif
Nicole Roberts
Lakshmi Menon

Taxi Community Advisory Board (CAB)
Editor/Grant Writer
Sonya Smyk

SALud y Nutrición para todos (SANOS)
Jennifer Leng, MD, MPH
Jacqueline Cabral
Robinson Lopez
Leslie Puebla
Giuseppe W. Quispe Ramos

Ventanilla De Salud
Josana Tonda Salcedo, National Coordinator of Ventanilla De Salud
Karina Escamilla, Health Affairs Coordinator

International Collaborators
Egypt Portal Project
M. Shinawi, MD, FACS, Associate Professor of General Surgery, Ain Shams University- Cairo Egypt

Research Nurses
Caroline Sturm Reganato
Jessica Llamozas

Formacion en Investigacion Psicosocial Oncologica para Latinoamerica (FIPOL) International Collaborators
X. Rocha-Cadman, USA, City of Hope
O. Galindo, Mexico, Instituto de Cancerologia
F. Montaña, Argentina, Hospital Britanico
E. Castro, Puerto Rico, Ponce Health Sciences Univ.
M.L. Ruda, Peru, Sociedad de Psico-oncologia Peruana
J. C. Sanchez, Peru, Instituto de Enfermedades Neoplasicas
L. Esenarro, Peru, Instituto de Enfermedades Neoplasicas
S. Cano, Chile, Instituto de Cancerologia
F. Gil, Spain, Instituto de Cancer de Catalana
M. Llanta Cuba, Instituto de Cancer
C. Bergerot, Brasil, Centro de Cancer de Brasilia
J. Restrepo, Colombia, Country Hospital
V. Cardenas, USA, San Diego Moores Cancer Institute
N. Torres, Puerto Rico, Ponce Health Sciences University



23

Funding Acknowledgments

National Cancer Institute

FOOD R01 CA230446

Cancer Center Support Grant P30 CA008748

CCNY/MSKCC U54 Partnership for Cancer Research Training & Community Outreach (U54 CA137788)

New York State Health Foundation

Laurie Tisch Illumination Fund

New York Community Trust

AVON Foundation



24

References

- Coleman-Jensen A RM, Gregory CA, Singh A. Household Food Security in the United States in 2019. 2020; <https://www.ers.usda.gov/webdocs/publications/99282/err-275.pdf?v=2444.3>
 - Laviano A, Meguid MM, Inui A, Muscaritoli M, Rossi-Fanelli F. Therapy insight: Cancer anorexia-cachexia syndrome--when all you can eat is yourself. *Nat Clin Pract Oncol*. 2005;2(3):158-165.
 - Ravasco P, Monteiro-Grillo I, Vidal PM, Camilo ME. Cancer, disease and nutrition are key determinants of patients' quality of life. *Support Care Cancer*. 2004;12(4):246-252.
 - Chilton M, Black MM, Berkowitz C, et al. Food Insecurity and Risk of Poor Health Among US-Born Children of Immigrants. *American Journal of Public Health*. 2009;99(3):556-562.
 - Kaili A, Chen JH. Mothers' citizenship status and household food insecurity among low-income children of immigrants. *New Dir Child Adolesc Dev*. 2008;2008(121):43-62.
 - Nam Y, Jung HJ. Welfare reform and older immigrants: food stamp program participation and food insecurity. *Gerontologist*. 2008;48(1):42-50
 - Bengle R, Sinnott S, Johnson T, Johnson MA, Brown A, Lee JS. Food insecurity is associated with cost-related medication non-adherence in community-dwelling, low-income older adults in Georgia. *J Nutr Elder*. 2010;29(2):170-191.
 - Puts MTE, Tu HA, Tourangeau A, et al. Factors influencing adherence to cancer treatment in older adults with cancer: a systematic review. *Annals of Oncology*. 2014;25(3):564-577.
 - Barcenas CH, Zhang N, Zhao H, et al. Anthracycline regimen adherence in older patients with early breast cancer. *Oncologist*. 2012;17(3):303-311.
 - Owusu C, Buist DS, Field TS, et al. Predictors of tamoxifen discontinuation among older women with estrogen receptor-positive breast cancer. *J Clin Oncol*. 2008;26(4):549-555.
 - Bender CM, Gentry AL, Brufsky AM, et al. Influence of patient and treatment factors on adherence to adjuvant endocrine therapy in breast cancer. *Oncol Nurs Forum*. 2014;41(3):274-285.
 - Regnier Denois V, Poirson J, Nourissat A, Jacquin JP, Guastalla JP, Chauvin F. Adherence with oral chemotherapy: results from a qualitative study of the behaviour and representations of patients and oncologists. *Eur J Cancer Care (Engl)*. 2011;20(4):520-527.
 - Gany F, Lee T, Ramirez J, et al. Do our patients have enough to eat?: Food insecurity among urban low-income cancer patients. *J Health Care Poor Underserved*. 2014;25(3):1153-1168.
- Background
- Kushel MB, Gupta R, Gee L, Haas JS (2006) Housing Instability and Food Insecurity as Barriers to Health Care Among Low-Income Americans. *J Gen Intern Med*. 21: 71-77
 - Gany F, Leng J, Ramirez J, Phillips S, Aragonas A, Roberts N, Mujawar MI, Costas-Muniz R (2015) Health-Related Quality of Life of Food-Insecure Ethnic Minority Patients With Cancer. *J Oncol Pract*. 11: 396-402
 - Sullivan AF, Clark S, Pallin DJ, Camargo CA, Jr. (2010) Food security, health, and medication expenditures of emergency department patients. *The Journal of emergency medicine*. 38: 524-528
 - Simmons LA, Modesitt SC, Brody AC, Leggin AB (2006) Food insecurity among cancer patients in Kentucky: a pilot study. *J Oncol Pract*. 2: 274-279
 - Van Cutsem E, Arends J. The causes and consequences of cancer-associated malnutrition. *Eur J Oncol Nurs*. 2005;9 Suppl 2:S51-63.
 - Schaible UE, Kaufmann SHE. Malnutrition and Infection: Complex Mechanisms and Global Impacts. *PLoS Medicine*. 2007;4(5):e115.
 - Reid MB, Allard-Gould P. Malnutrition and the critically ill elderly patient. *Crit Care Nurs Clin North Am*. 2004;16(4):531-536.
 - Strohle A, Zanker K, Hahn A. Nutrition in oncology: the case of micronutrients (review). *Oncol Rep*. 2010;24(4):815-828.
 - Schaffer MR, Tantry U, Ahrendt GM, Wasserkrug HL, Barbul A. Acute protein-calorie malnutrition impairs wound healing: a possible role of decreased wound nitric oxide synthesis. *J Am Coll Surg*. 1997;184(1):37-43.
 - Brown JL, Pollitt E. Malnutrition, poverty and intellectual development. *Sci Am*. 1996;274(2):38-43.
 - Gany F, Lee T, Ramirez J, et al. Are our severely ill patients hungry? *Journal of Clinical Oncology*. 2011;29(15_suppl):e19626-e19626.
 - Charkhchi P, Fazeli Dehkordi S, Carlos RC. Housing and Food Insecurity, Care Access, and Health Status Among the Chronically Ill: An Analysis of the Behavioral Risk Factor Surveillance System. *J Gen Intern Med*. 2018;33(5):644-650
 - Gany F, Melnic I, Ramirez J, Wu M, Li Y, Paolantonio L, Smith J, Pan S, Roberts-Eversley N, Blinder V, Leng J. Food Insecurity among Cancer Patients Enrolled in the Supplemental Nutrition Assistance Program (SNAP). *Nutr Cancer*. 2020 Apr 9:1-9.
 - McDougall JA, Anderson J, Adler Jaffe S, et al. Food Insecurity and Forgone Medical Care Among Cancer Survivors. *JCO Oncol Pract*. 2020;16(9):e922-e932
 - Economic Research Service. U.S. Household Food Security Survey Module: Three-Stage Design, With Screeners. In: Agriculture USDo, ed: US Government; 2012.
 - Gusi N, Olivares PR, Rajendram R. The EQ-5D Health-Related Quality of Life Questionnaire. In: Preedy VR, Watson RR, eds. *Handbook of Disease Burdens and Quality of Life Measures*. New York, NY: Springer New York; 2010:87-99.
 - Paolantonio L, Kim SY, Ramirez J, Roberts-Eversley N, Li Y, Melnic I, Wu M, Jugtar DR, Smith J, Oladele M, Gany F. Food Purchasing Behavior of Food Insecure Cancer Patients Receiving Supplemental Food Vouchers. *Support Care Cancer*. 2020 Aug;28(8):3739-3746

Date 25

25

MaineHealth

Food to Address Outcomes: Strategies to Support Patients with Cancer Facing Food Insecurity

March 14, 2023

Emily Kain, MPH
Senior Program Manager, Community Health
MaineHealth

26

Goals for Today

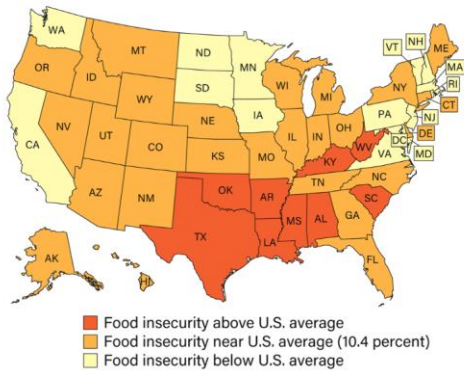


MaineHealth Food Pantry at
Maine Medical Center, Portland, ME

- Describe MaineHealth’s focus on addressing food insecurity.
- Explain how MaineHealth developed a system-wide food insecurity screening initiative.
- Assess opportunities to implement food access programming and identify potential collaborators.
- Identify methods to provide access to healthy food resources.
- Provide resources, tools, and tips for patient support.



Prevalence of food insecurity, average 2019-21



Source: USDA, Economic Research Service using data from U.S. Department of Commerce, Bureau of the Census, 2019, 2020, and 2021 Current Population Survey Food Security Supplements.

Prevalence of Food Insecurity By State, 2019-2021

MaineHealth

Food Insecurity in Maine 2021

- 9.5%** of households experienced food insecurity
- 20%** of children experienced food insecurity
- 16%** of seniors experienced food insecurity
- 12th** in the country for food insecurity
- 37%** did not qualify for federal food assistance

PATIENT-CENTERED RESPECT INTEGRITY EXCELLENCE OWNERSHIP INNOVATION 29

Food Insecurity: A Priority for MaineHealth



Garden at LincolnHealth, Damariscotta, ME

Goal

Ensure consistent and equitable access to healthy, safe, affordable foods essential to optimal health and well-being through clinical and community initiatives to improve outcomes

Key priority from Community Health Needs Assessment

Meaningful and actionable focus area for health system

Part of continuum of care; builds on existing programs

MaineHealth

PATIENT-CENTERED RESPECT INTEGRITY EXCELLENCE OWNERSHIP INNOVATION 30



Where to Begin: How MaineHealth Developed a System-wide Food Insecurity Screening Initiative

31

Steps to Develop a System-wide Food Insecurity Screening Initiative

STEP 1

Utilize a Standardized Screening Tool

MaineHealth integrated the Hunger Vital Sign™ in EHR

STEP 2

Seek Clinical Champions to Support the Effort

Started by working with pediatric practices to integrate into workflows

STEP 3

Offer a Figurative (and literal!) Carrot

Partnership with food bank led to technical assistance and emergency food bags

STEP 4

Collect and Share Data

Provided practice/department level data reports and integrated into strategic plan

32

The Hunger Vital Sign™ Food Insecurity Screening Questions

For each statement, please tell me whether the statement was “often true, sometimes true, or never true” for your household:

A.

“Within the past 12 months we worried whether our food would run out before we got money to buy more.”

Often True

Never True

Sometimes True

Don't Know/Refused

B.

“Within the past 12 months the food we bought just didn't last and we didn't have money to get more.”

Often True

Never True

Sometimes True

Don't Know/Refused

MaineHealth

*If any of these answers are chosen response is considered positive

33

Food Insecurity Screening in Primary Care Practices

(Pediatric patients ages 0-17)
October 1, 2021-September 2022

50,790+
Patients Screened

74%
Average
Screening Rate

4.3%
Average Positive
Rate

Over 1,880 bags of emergency food distributed =
Over 15,660 healthy meals



MaineHealth

PATIENT-CENTERED RESPECT INTEGRITY EXCELLENCE OWNERSHIP INNOVATION

34

Recommendations for Implementing Food Insecurity Screening in a Clinical Setting

Screen

- Utilize Hunger Vital Sign screener consistently
- Reduce stigma and bias in approach

Document

- Document responses in EHR
- Ensure data is reportable

Engage

- Frame assistance as a health care intervention
- Ask patients about experience accessing food

Connect

- Connect to both immediate and sustainable food access resources

MaineHealth

PATIENT-CENTERED RESPECT INTEGRITY EXCELLENCE OWNERSHIP INNOVATION 35

35

Food Access Resources

Tier One: Clinical-based support

- SNAP/WIC application support
- Food pantry lists integrated into EHR
- Referrals
- FindHelp.org
- Other community resources

Tier Two: Direct food access

- Gardens at practice/hospital campus
- Emergency food bags in clinical setting
- Hospital-based food pantries or food shelves

Tier Three: Connecting food access to health outcomes

- Food as Medicine programming for patients experiencing food insecurity and chronic disease

MaineHealth

PATIENT-CENTERED RESPECT INTEGRITY EXCELLENCE OWNERSHIP INNOVATION 36

36

LINCOLN COUNTY FOOD PANTRIES

PLEASE CONTACT FOOD PANTRIES AND MEAL SITES FOR UPDATED DISTRIBUTION SCHEDULES

Information is likely to change frequently due to COVID-19 adjustments and only represents the most recent information available as of date listed below. Scan the code to find the most up to date pantry hours.

<p>BOOTHBAY BOOTHBAY REGION FOOD PANTRY 125 Townsend Ave (207) 350-2962 Hours: Open Fri 11 am - 1 pm Notes: Drive-thru model with pre-packed boxes</p> <p>JEFFERSON JEFFERSON AREA COMMUNITY FOOD PANTRY 72 Gardiner Rd (207) 242-6933 Hours: 2nd and 4th Weds from 4 pm - 5:30 pm Notes: Prepacked boxes, pre-bagged produce curbside delivery</p> <p>NEW HARBOR NEW HARBOR FOOD PANTRY 6 South Side (207) 529-2501 Hours: Sat 9 am - 10 am Notes: Drive thru model with pre-packed boxes. Allowing a "proxy" pick-up where neighbour/family members can pick up for others</p>	<p>NEWCASTLE NEWCASTLE ECUMENICAL FOOD PANTRY 51 Main Street (207) 563-3379 Hours: Tues from 9:30 am - 11 am Notes: Pre-packed boxes, pre-bagged produce, curbside delivery. Only volunteers allowed in building</p> <p>WALDOBORO WALDOBORO FOOD PANTRY 124 Friendship St (207) 703-7363 Hours: 1st and 3rd Tues from 12 pm - 3 pm Notes: Pre-packed boxes</p> <p>WESTPORT ISLAND WESTPORT ISLAND HELPING HANDS 388 Perry Rd (207) 883-8477 Notes: Delivery and by appointment only</p>
----------------------------------------------------------------------------------------------------------------------------------------------------------------------------------------------------------------------------------------------------------------------------------------------------------------------------------------------------------------------------------------------------------------------------------------------------------------------------------------------------------------------------------------------------------------------------------------------------------------------------------------------------------------------------------------------------------------------------------------------------------------------------------------------------------------------------------------------------------------------------------------------------------------------------------------------------------------------------------------------------------------------------------	---------------------------------------------------------------------------------------------------------------------------------------------------------------------------------------------------------------------------------------------------------------------------------------------------------------------------------------------------------------------------------------------------------------------------------------------------------------------------------------------------------------------------------------------------------------------------------------------------------------------------------------------------------------------------------------------------------------------------------------------------------------------------------------------------------------------------------------------------------------------------------------

partnering to end hunger

MaineHealth

PATIENT-CENTERED RESPECT INTEGRITY EXCELLENCE OWNERSHIP INNOVATION 37

37

Emergency food bags

38

Hospital Based Food Pantries in Rural Communities

- Summer/fall 2021 MaineHealth opened the **first two hospital based food pantries in Maine**
 - Goal to **provide healthy food** for the patient and their entire household each week
 - Developed the **MaineHealth Food Insecurity Workgroup**
 - Created food pantry guiding principles to ensure **dignified, confidential and welcoming experience**, such as:
 - **Client choice model**
 - **Nutritious and culturally relevant foods**
 - **Community collaboration**

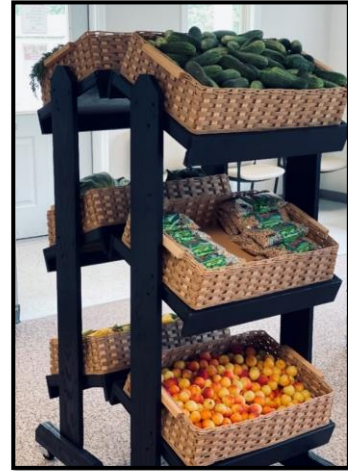


Photo of the MaineHealth Food Pantry at Franklin, Farmington, ME

FOOD IS MEDICINE

Visit the MaineHealth Food Pantry



At our food pantry:

- You can get enough FREE fresh, frozen and shelf-stable food to feed a household for up to 1 week!
- There is no income eligibility or restrictions.
- You can also get FREE infant formula, diapers, and personal care products like soap and toothpaste.
- We have a confidential and welcoming environment.

Where is it?

200 Franklin Health Commons, Farmington — The food pantry is on the Franklin Memorial Hospital campus. Turn right at the main entrance and look for the signs.

When can I go?

Open hours: Monday, Wednesday and Friday from 10 a.m.-2 p.m. or by appointment.

For more information: 207-779-2150 | www.fchn.org/food
FranklinFoodPantry@mainehealth.org



Photos of the MaineHealth Food Pantry at Franklin, Farmington, ME; MaineHealth Food Pantry at Stephens, Norway, ME

Per month each pantry serves ~85 households made up of 200 individuals



Produce Distribution in Hospital Retail Pharmacy
Southern Maine Health Care

Prescription for Health

Name: _____

Pick up a FREE bag of fresh produce from Southern Maine Health Care pharmacy.

Hours: Monday-Friday, 8 a.m.-6 p.m.
Saturday, 9 a.m.-3 p.m.
Sunday, Closed



1 MEDICAL CENTER DRIVE, 1ST FLOOR MAIN LOBBY, BIDDEFORD



Other Food Access Opportunities to Consider

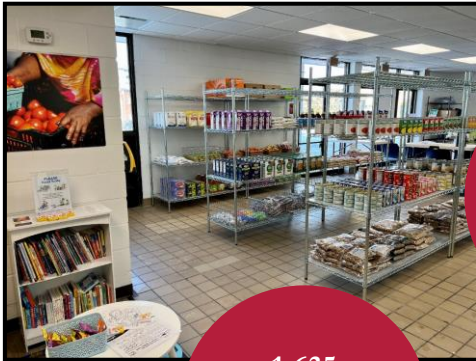
Help Yourself Shelves in Clinical Offices

Lincoln County Health Care, Pen Bay Medical Center, Waldo County Healthcare



Newest Hospital Based Food Pantry at Maine Medical Center, Portland, Maine

In our first 12 days...



1,635 households served

6,028 individuals served

~55,000 pounds of food distributed



Food as Medicine Programming: connecting food access to health outcomes



- **Program Overview:**

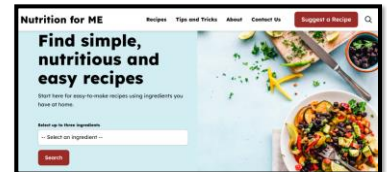
Free one-year program with access to **healthy food for entire household**, healthy **cooking classes** and recipes, community **connection/support**, chronic **disease self-management** education

- **Goals include:**

Improve **healthy behaviors** and chronic disease **health outcomes**, increase food security/reduce SDOH barriers, utilize food pantry for **healthy food access**, collaborate with community partners, **create social connections**

- **Eligibility:**

MaineHealth primary care patients age 18+ with a **chronic health condition** and **limited access to affordable, healthy food**



What's Next?



Garden veggies from Southern Maine Health Care, Biddeford, ME

- Hoping to expand:
 - food insecurity screening within and beyond primary care
 - number of clients accessing hospital-based food pantries
 - Food as Medicine programming; testing new models and new locations

MaineHealth

PATIENT-CENTERED RESPECT INTEGRITY EXCELLENCE OWNERSHIP INNOVATION 45

45

FREE LLS RESOURCES FOR HEALTHCARE PROVIDERS

- ❑ CME & CE courses: www.LLS.org/CE
- ❑ Fact Sheets for HCPs: www.LLS.org/HCPbooklets
- ❑ Videos for HCPs: www.LLS.org/HCPvideos
- ❑ Podcast series for HCPs: www.LLS.org/HCPpodcast
- ❑ Staying Connected: Facilitating the Learning Experience During & After Cancer Treatment: www.LLS.org/StayingConnected

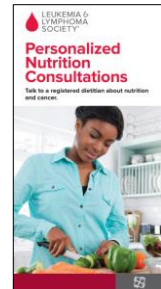


LEUKEMIA & LYMPHOMA SOCIETY®

46

FREE LLS RESOURCES FOR PATIENTS

- ❑ **Information Specialists** – Personalized assistance for managing treatment decisions, side effects, and dealing with financial and psychosocial challenges (IRC).
- ❑ **Clinical Trial Nurse Navigators** – RNs provide a personalized service for patients seeking treatment in a clinical trial, sift through the information and provide information to bring back to their HC team (CTSC). www.LLS.org/CTSC
- ❑ **Registered Dietitians** – (LLS) provides PearlPoint Nutrition Services® to patients/caregivers of all cancer types, free nutrition education and one-on-one consultations by phone or email. www.LLS.org/Nutrition
- ❑ **Reach out Monday–Friday, 9 am to 9 pm ET**
 - Phone: (800) 955-4572
 - Live chat: www.LLS.org/IRC
 - Email: infocenter@LLS.org
- ❑ **HCP Patient Referral Form:** www.LLS.org/HCPreferral



47

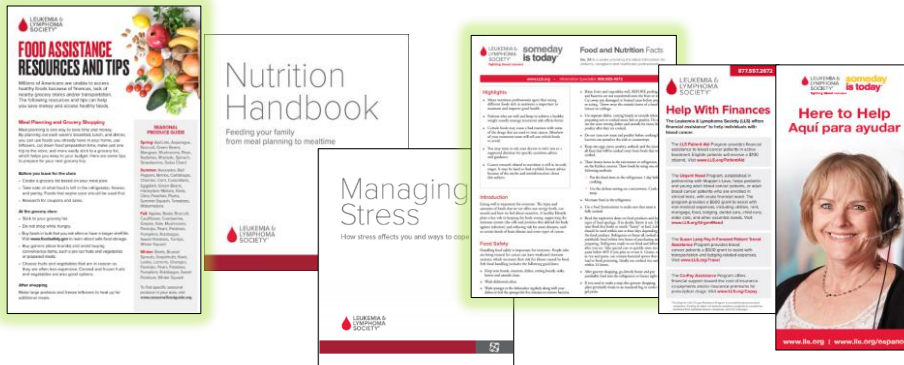
FREE LLS RESOURCES FOR PATIENTS

- ❑ **Webcasts** www.LLS.org/Webcasts
- ❑ **Videos** www.LLS.org/EducationVideos
- ❑ **Podcasts:** www.LLS.org/Podcast
- ❑ **Support Resources**
 - ❑ Financial Assistance: www.LLS.org/Finances
 - Urgent Need
 - Patient Aid
 - Travel Assistance
 - ❑ Other Support: www.LLS.org/Support
 - LLS Regions
 - Online Weekly Chats Facilitated by Oncology SW
 - LLS Community Social Media Platform
 - First Connection Peer to Peer Program
 - ❑ LLS Health Manager™: www.LLS.org/Health-Manager



48

FREE LLS RESOURCES FOR YOUR PATIENTS



Booklets and fact sheets

English: www.LLS.org/Booklets

Spanish: www.LLS.org/Materiales



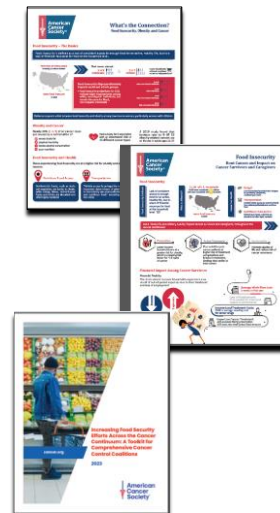
FREE FOOD INSECURITY RESOURCES FROM AMERICAN CANCER SOCIETY

FACT SHEETS

- Food Insecurity, Obesity, and Cancer: What's the Connection?
- Food Insecurity: Root Causes and Impact on Cancer Survivors and Caregivers
- Food Insecurity: Resources and Tips for Cancer Survivors and Caregivers

NEW TOOLKIT COMING SOON!

- Increasing Food Security Efforts Across the Cancer Continuum: A Toolkit for Comprehensive Cancer Coalitions



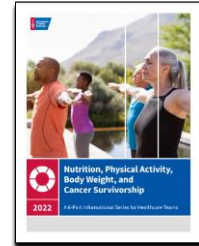
FREE NUTRITION AND PHYSICAL ACTIVITY RESOURCES FOR CANCER SURVIVORS AND CLINICIANS FROM ACS

TOOLKIT FOR CLINICIANS

- ❑ Nutrition, Physical Activity, Body Weight, and Cancer Survivorship: A 6-Part Informational Series for Healthcare Teams

VIDEO SERIES FOR SURVIVORS

- ❑ Benefits of Healthy Behaviors for Cancer Survivors
- ❑ Beneficios de los comportamientos saludables para los sobrevivientes de cáncer



51

AMERICAN CANCER SOCIETY RESOURCES

Patient/Survivor Support

- ❑ **24/7 Cancer Helpline** – trained cancer information specialists can answer questions about your diagnosis, connect you with ACS programs, and refer to other national resources. **1-800-227-2345** or **live chat on [cancer.org](https://www.cancer.org)**
- ❑ **Places to stay during treatment** – Our Hope Lodge® program provides a free, nurturing home away from home for cancer patients and their caregivers when they have to travel for treatment. **[cancer.org/hopelodge](https://www.cancer.org/hopelodge)**
- ❑ **Rides to treatment** – Our Road To Recovery® volunteer drivers provide free rides to cancer patients who would otherwise have difficulty getting to their cancer-related appointments. In some areas, we also offer community transportation grants to health systems to help patients get to treatment. **[cancer.org/roadtorecovery](https://www.cancer.org/roadtorecovery)**
- ❑ **Connecting cancer survivors** - Our Cancer Survivors NetworkSM (CSN) provides a safe online connection where cancer patients and caregivers can find others with similar experiences and interests. As a CSN member, you can participate on discussion boards, join a chat room, and build your own support network. **[csn.cancer.org](https://www.csn.cancer.org)**
- ❑ **Breast cancer support** - Our Reach To Recovery® program connects breast cancer patients with trained volunteers to receive peer-to-peer support on everything from practical and emotional issues to helping them cope with their disease, treatment, and long-term survivorship issues. **[reach.cancer.org](https://www.reach.cancer.org)**



52

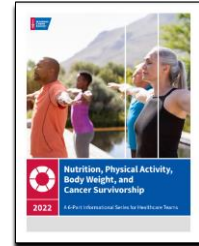
FREE NUTRITION AND PHYSICAL ACTIVITY RESOURCES FOR CANCER SURVIVORS AND CLINICIANS FROM ACS

TOOLKIT FOR CLINICIANS

- ❑ Nutrition, Physical Activity, Body Weight, and Cancer Survivorship: A 6-Part Informational Series for Healthcare Teams

VIDEO SERIES FOR SURVIVORS

- ❑ Benefits of Healthy Behaviors for Cancer Survivors
- ❑ Beneficios de los comportamientos saludables para los sobrevivientes de cáncer



53

AMERICAN CANCER SOCIETY RESOURCES

Patient/Survivor Support (cont.)

- ❑ **Hair loss and mastectomy product** – The American Cancer Society's "tlc" Tender Loving Care® program helps women with appearance-related side effects by offering them a variety of affordable wigs, hats, and scarves as well as a full range of mastectomy products. 1-800-850-9445 or [tlcdirect.org](https://www.tlcdirect.org)
- ❑ **ACS Books** – We publish books that help patients and their caregivers when they are dealing with a cancer diagnosis and treatment. They range from patient education, quality of life, and caregiving issues to healthy living. [cancer.org/bookstore](https://www.cancer.org/bookstore)

Caregiver Support

- ❑ **Caregiver Resource Guide** - Provides information about the caregiving process and what to expect with a cancer diagnosis and its treatment, as well as focusing on caregiver self-care, communication, coping, and caregiver resources. [cancer.org/caregiverguide](https://www.cancer.org/caregiverguide)
- ❑ **Caregiver Video Series** - provides educational support to caregivers as they assist with everyday needs of loved ones and provides self-care techniques to improve their own quality of life. [cancer.org/caregivervideos](https://www.cancer.org/caregivervideos)

Clinical Trials

- ❑ If you would like to learn more about clinical trials that might be right for you, contact us at **1-800-227-2345** and speak with one of our caring, trained staff. Or visit [cancer.org/clinicaltrials](https://www.cancer.org/clinicaltrials)



54

Q & A

Ask a question by **web**:

- Click “Ask a question”
- Type your question
- Click “Submit”



55

THANK YOU

THANK YOU FOR ATTENDING!

Evaluation link for and CE credit:

<https://mli.link/lis-acscs>



56